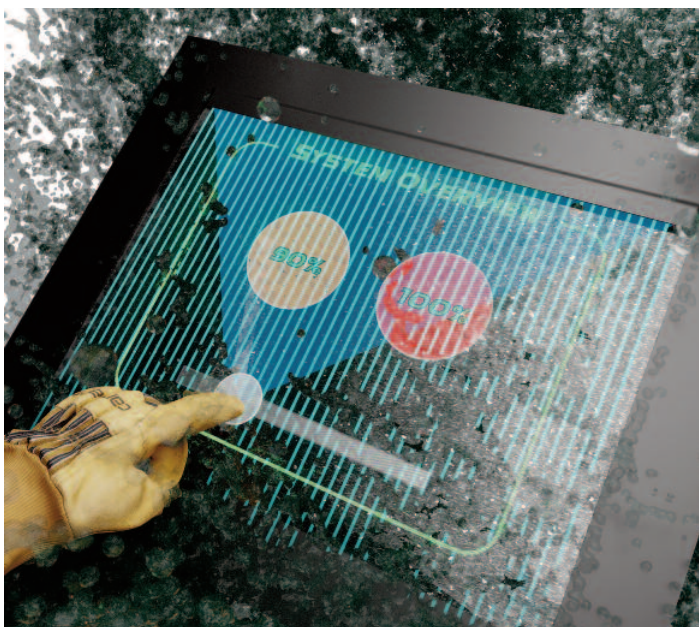


Weatherproof.

Neonode® Touch Sensor Modules give you total control – even in the toughest environment.

Add versatility and performance to your equipment by easily integrating Neonode Touch Sensor Modules to any display or surface for use in the most demanding environments.

Don't settle for ordinary touch controls or display panels when you can easily design your product to be touch or contactless using Neonode's reliable, rugged, and economical Touch Sensor Module today!



Climate Independent

Outfit your display for bad weather or rugged conditions with easily adjustable detection distance.



Gloves On!

Neonode Touch Sensor Modules work with all gloved hands – regardless of material or thickness.



Light Resistant

Neonode Touch Sensor Modules work in environments with intense or glaring light without any aging effect.



No Electromagnetic Interference (EMI)

Neonode Touch Sensor Modules provide reliable interaction without EMI issues in sensitive environments.



Temperature Robustness

Neonode Touch Sensor Modules add interaction to any surface in hot or cold temperatures without degradation.

Over 73 million products on the market and 4 million cars have used Neonode's Technology.

Contact your regional Neonode Sales Representative to design our Touch Sensor Modules into your next application today.



<https://products.neonode.com/us/touch-sensor>